

**NOTE TO SPECIFYING ARCHITECT REGARDING
SECTION 11087-24
PERFORMANCE LIGHTING SYSTEM
(24 DIMMERS)**

Small complete performance lighting system (dimmers, control, distribution, and lighting fixtures).

The smallest system recommended for educational theatres.

Modest budget.

Phone 800-548-8982 for clarification or assistance. No charge, of course.

SECTION 11087-24
PERFORMANCE LIGHTING SYSTEM (24 DIMMERS)

PART 1-GENERAL

- 1.01 Furnish and deliver a stage lighting control system described hereinafter. Equipment shall conform to all applicable provisions of local electrical code, National Electric Code, and NBFU current issue. The lighting control system specified as the standard is Janson-ETC digital lighting system. (Janson Industries 800 548 8982)
- 1.02 Provide and install dimmers and controls as specified herein and as shown on the drawings. Contractor is to receive, mount, connect, and place all equipment in operation. Contractor will furnish all conduit, wire, connectors, and hardware, and other incidental items necessary for a complete and properly functioning lighting and dimming system.
- 1.03 Shop drawings shall be submitted for approval within 30 days after receipt of contract. No fabrication of equipment is to proceed prior to approval of these drawings. Submittal package shall contain six (6) sets of the following.
 - A. Complete material list.
 - B. Sets of catalog cut sheets of standard equipment.
 - C. Sets of shop drawings detailing all mechanical and electrical equipment including riser diagrams, wire counts, internal wiring and physical dimensions of each item.
- 1.04 Prime electrical contractor shall furnish and install new dimmer panel and connect the power and the load circuits to the new dimmer panel. Prime electrical contractor shall furnish and install and connect all circuits that terminate in gridiron junction boxes, wall boxes, outlet boxes, etc, as well as all dimmable circuits that home-run to dimmer rack SR.
- 1.05 Base bid includes 24 dimmers (12 modules), which include all dimmable performance light circuits plus all dimmable house light circuits.

PART 2-MATERIALS

- 2.01 LIGHTING CONTROL SYSTEM TO CONSIST OF:
 - A. Unison Dimmer Rack-Model DR12-24-100-wall mounted cabinet to contain:
 - 1-DR12 Dimmer enclosure for 12 modules-designed for 3 phase 4 wire and ground operation at a maximum of 160 A, 120/208V, 60Hz AC
 - 12-D20 Dual dimmer modules (24 dimmers)
 - AFM Air Flow modules (as needed)
 - 1-locking door with filter
 - B. Express 24/48 Control Console-96 channels x 1,024 DMX512 dimmers, to contain:
 - 96 Channels
 - 1024 DMX512 dimmers
 - 600-Cues
 - 500-Groups
 - 99 focus points
 - Effects eith up to 100 steps each
 - 2,000-Macros
 - 24-Submaster x 10 pages
 - 2 timed/manual fader pairs
 - 1-Diskette drive
 - 1-Single VGA output
 - 1-Printer port
 - UL, cUL, CE listed

- C. Accessories
 - 1-CD-25DMX Digital control cable
 - 2-ECPB-DMX Console plug-in stations
 - 1-Color VGA Monitor
 - 1-Control console dust cover
 - 1-Monitor dust cover
- D. Module U 10001 Panic Station with lockable cover (2 required) Houselight control "on-off" (6 required)
- E. Model U407121F-(2 required)-Unison Control Station with each as follows:
 - 1-White faceplate assembly to include the following: (in booth and on stage)
 - 1-"Master" Slider Assembly
 - 6-"Zone X" Slider Assembly
 - 9-"Preset X" Select Switch
 - 1-"Off" Select Switch
 - 1-"Manual" Select Switch
 - 1-"Record" Select Switch
- F. Model U2RSP-11F-(2 required)- PC Interface Station for plugging-in control console with:
 - 1-White faceplate assembly to include the following:
 - 1-"Computer" Unison PC Connector (symbol PIS on drawings)
- G. Provide Model ASTS for emergency power to 8 designated circuits

2.02 DISTRIBUTION EQUIPMENT

A. Connector Strips

1 CS-40-5BPR31 Connector strip 40'-0" Long with 10-18" pigtails and 20A PIN connectors wired on 5-20A circuits plus 9 hanging brackets complete with Gridiron junction box 1-45 ft run of #12/15 conductor SO multiconductor cable, cradles and standard Kellems strain relief (circuit aabb....)

1 CS-40-4BPR31 Connector strip 40'-0" Long with 8-18" pigtails and 20A PIN connectors wired on 4-20A circuits plus 9 hanging brackets complete with Gridiron junction box, 1-45' run of #12/12 conductor SO multiconductor cable, cable cradles and standard Kellems strain relief (circuit aabb....)

1 CS40-3BPR31 Connector strip 40'-0" Long with 6-18" pigtails and 20A PIN connectors wired on 3-20A circuits plus 9 hanging brackets complete with Gridiron junction box, 1-45' run of #12/9 conductor SO multiconductor cable, cable cradles, and standard Kellems strain relief. (Circuit aabb....)

NOTE: All pipe and rigging is specified in a different section of the specifications.

B. Pigtail and Outlet Boxes

Surface mounted junction boxes at stage roof steel (3) D-JBO5-30

(1) 5 circuit gridiron junction box

(1) 4 circuit gridiron junction box

(1) 3 circuit gridiron junction box

(8) Pipe mounted outlet boxes each with 2-20A pin connector receptacles complete with U-bolts for mounting. (Each box has 2 outlets; 1 circuit) These front-of-house boxes shall be wired using conduit. Connector strip is not required.

2.03 THEATRE FIXTURES AND ACCESSORIES

A. Focusing Units

3 ETC 419j-b Source Four JR ellipsoidal with HPL 575 lamp, and 20A stage pin connector wired on, c-clamp, colorframe and safety cable.

5 ETC S4PAR-EA-B Source Four PAR spotlights complete with c-clamp, colorframe, safety cable, 4 lens set, 1M lead with 20A stage pin connector wired on, and HPL 575 lamp

4 ETC 426J-B Source Four JR ellipsoidal spotlights complete with c-clamp, colorframe, safety cable, 1 M lead with 20A stage pin connector wired on, and HPL 575 lamp

3 ETC 450J-B Source Four JR ellipsoidal spotlights complete with c-clamp, colorframe, safety cable, 1M lead with 20A stage pin connector wired on and HPL 575 lamp

6 Altman 165Q 6" fresnels complete with c-clamp, colorframe, safety cable, 1M lead with 20A stage pin connector wired on and 500W BTL lamp

B. Follow Spotlight

1-Altman Follow Spotlight, Comet with lamp, and 25 ft of feed cable, iris, color boomerang, tripod, and dolly

2.04 MANUFACTURER'S SERVICES

A. Seven sets of B size drawings for approval submitted within 2-6 weeks of receipt of order.

B. Two-year limited warranty on parts and workmanship.

C. Services of a factory engineer to energize system and instruct user personnel. Such services shall be supplied on 21 days notice.

D. Production requires 1-6 weeks for delivery of equipment after receipt of written approval and release.

E. Two sets of Operation Manuals.

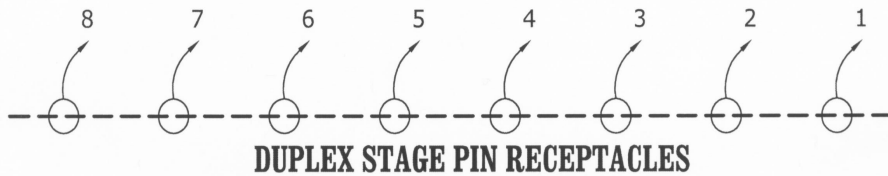
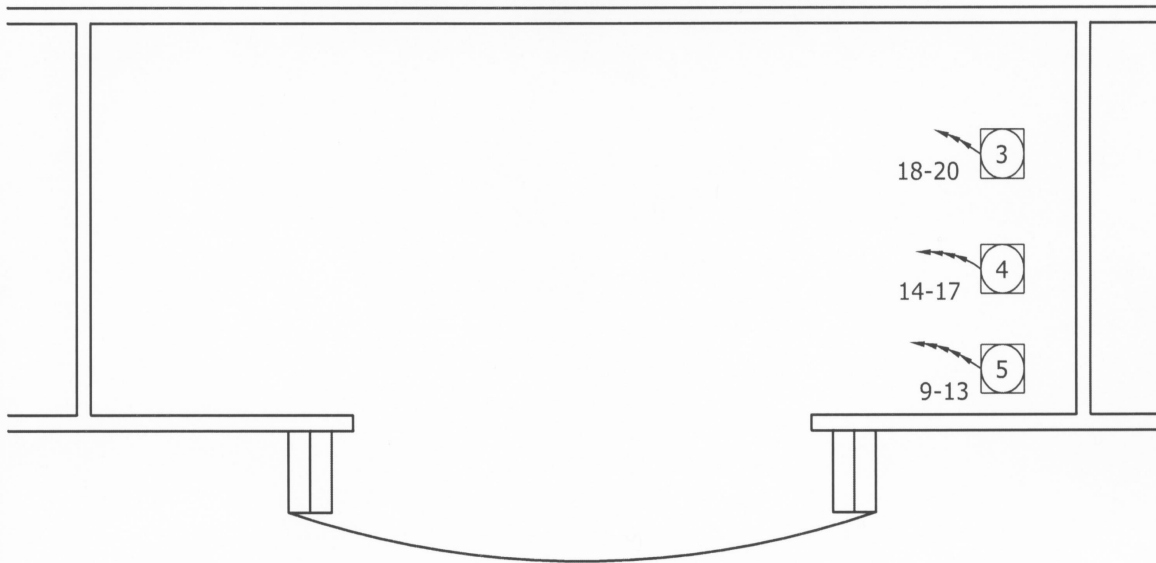
PART 3-EXECUTION

3.01 Furnish all of the above equipment complete with all lamps, color frames, plastic color mediums, cords, plugs, cradles, pipe clamps and all other equipment necessary for a complete installation. All equipment shall be furnished and installed completely, and shall be left ready for use. All equipment furnished and installed shall be consistent with requirements of the National Electric Code.

END OF SECTION

11087-24-3

SECTION 11060
PERFORMANCE LIGHTING SYSTEM (24 DIMMERS)



□ = GRIDIRON JUNCTION BOXES:

- *NUMBER INSIDE SYMBOL INDICATES NUMBER OF CIRCUITS ON TERMINAL BLOCK.
- *ARROWHEADS REPRESENT NUMBER OF CIRCUITS.

SUMMARY OF PERFORMANCE LIGHTING DIMMABLE CIRCUITS

- *1 - 8 = FRONT SPOT LIGHTS
- *9 - 13 = ELECTRIC #1
- *14 - 17 = ELECTRIC #2
- *18 - 20 = ELECTRIC #3
- *21 - 24 = AVAILABLE FOR OTHER CIRCUITS
- *PERFORMANCE LIGHTING CIRCUITS HOME-RUN TO DIMMER RACK
- *ALL DIMMER CIRCUITS REQUIRE (2) WIRES FOR 20 AMP SERVICE
24-2400 WATT DIMMERS
- *LOCATE DIMMER RACKS NEAR MAIN POWER FEED
- *120-208 VOLT (3) PHASE POWER - 160 AMPS MAXIMUM

